

HPLC Analysis Report

Sample: Toremifene citrate

CAS: 89778-27-8

Batch No.: KB20141203

Mfg. Date: November 15, 2014

Buffer A: 0.04% TFA in 100% water(v/v)

Buffer B: 0.04% TFA in 100% acetonitrile (v/v)

Gradient: 30-90% Buffer B in 25 min

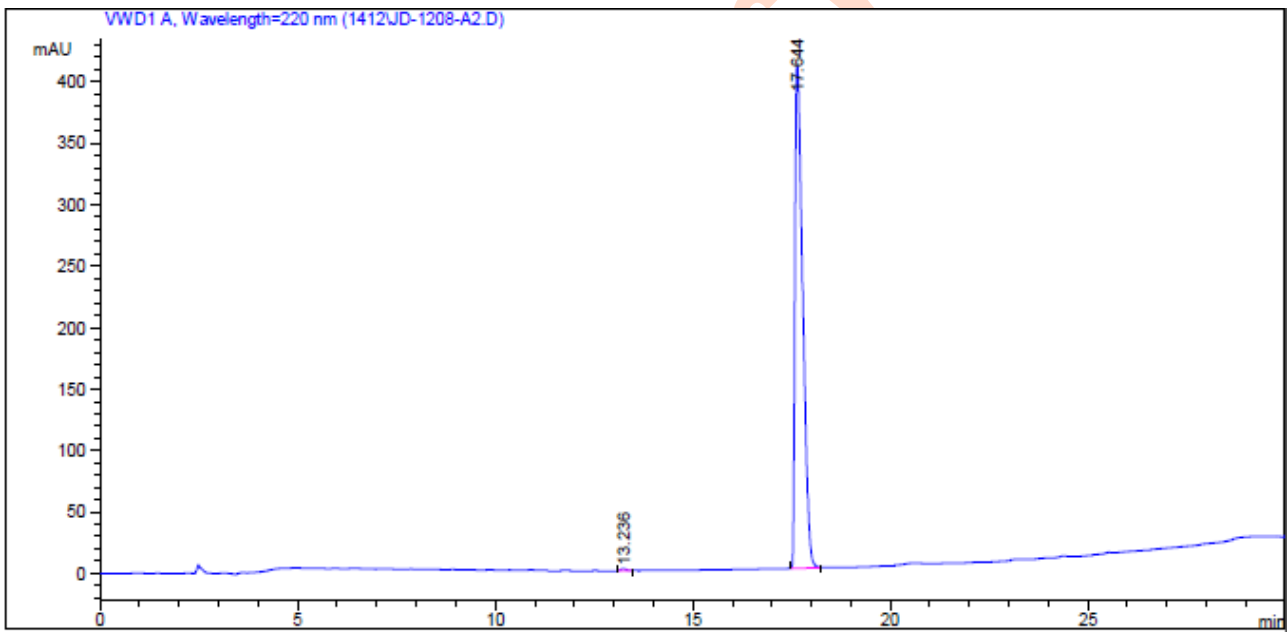
Flow: 1ml/min

Wavelength:220nm

Column: Alltima C18,4.6*250mm,5um

Date: December 8, 2014

Chromatogram



Peak#	RetTime(Min)	Width(Min)	Area(mAU*s)	Height(mAU)	Area(%)
1	13.236	0.1458	14.23377	1.51809	0.2540
2	17.644	0.2100	5588.65430	409.97940	99.7460
Totals			5602.88807	411.49749	100

Analysis Result:

Purity: 99.75%

MS Spectrum

*MSD1 SPC, time=0.255:1.037 of C:\CHEM32\1\DATA\141209\140210 2014-12-09 10-21-49\SIG1000004.D ES-API, Pos, Scan, Fr

