

# Sermorelin HPLC Analysis Report

Sample: **H-Tyr-Ala-Asp-Ala-Ile-Phe-Thr-Asn-Ser-Tyr-Arg-Lys-Val-Leu-Gly-Gln-Leu-Ser-Ala-Arg-Lys-Leu-Leu-Gln**

**-Asp-Ile-Met-Ser-Arg-NH<sub>2</sub>**

Sample ID: **Sermorelin**

Buffer A: 0.1% TFA in 100% water (v/v)

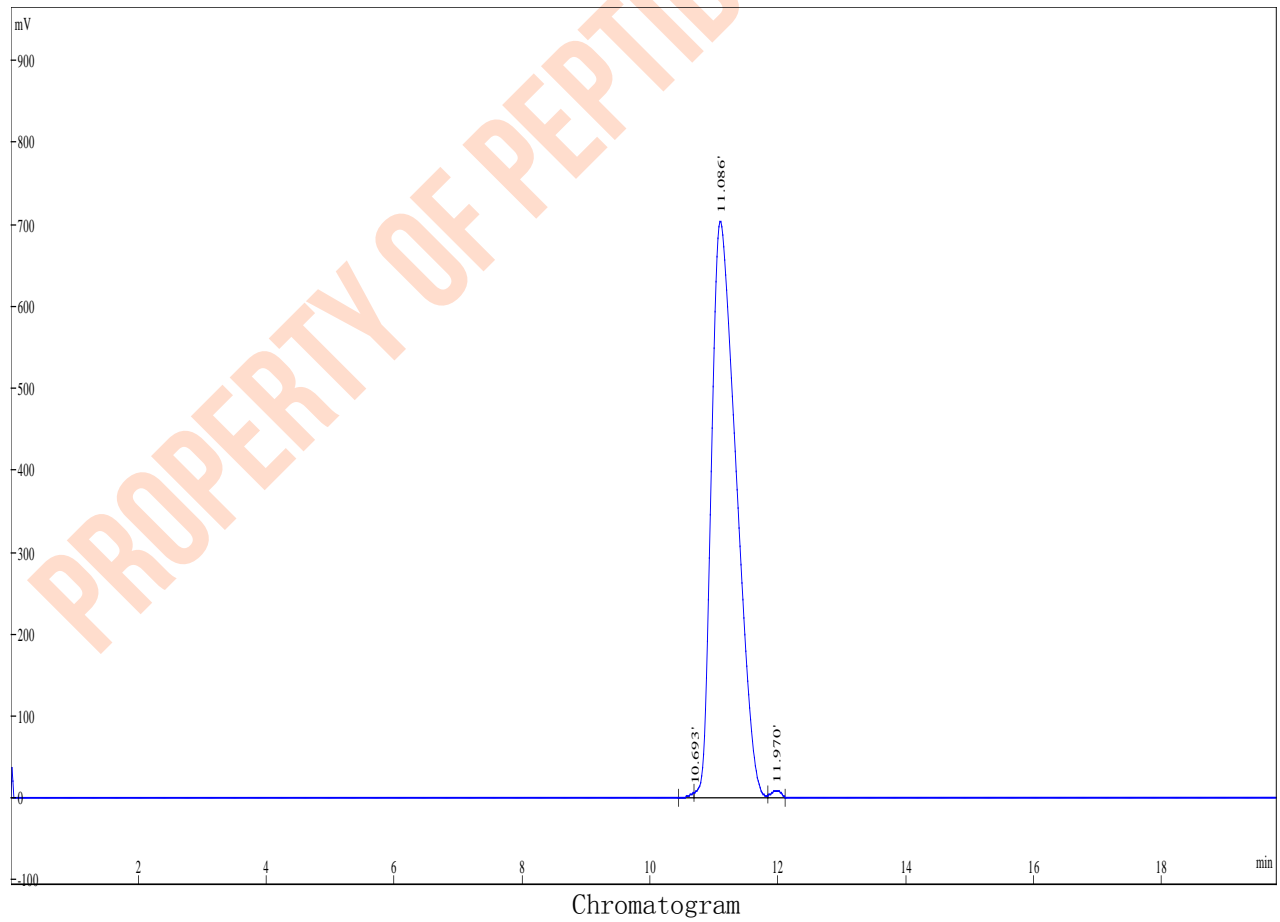
Buffer B: 0.1% TFA in 80% acetonitrile + 20% water (v/v)

Gradient: 42–52% Buffer B in 20min

Flow: 1ml/min

Wavelength: 220nm

Column: Venusil C18 5um 4.6\*250mm



---

Signal	Peak#	RT(min)	Area%	Area(mAU*s)	Height(mAU)
	1	10.693	0.2409	45901	7966
	2	11.086	99.2	18899974	703512
	3	11.970	0.5576	106223	9443
Total			100	19052098	720921

---

PROPERTY OF PEPTIDES WAREHOUSE