

LR3-IGFI HPLC Analysis Report

Sample: LR3-IGFI

Buffer A: 0.1% TFA in 100% water (v/v)

Buffer B: 0.1% TFA in 80% acetonitrile + 20% water (v/v)

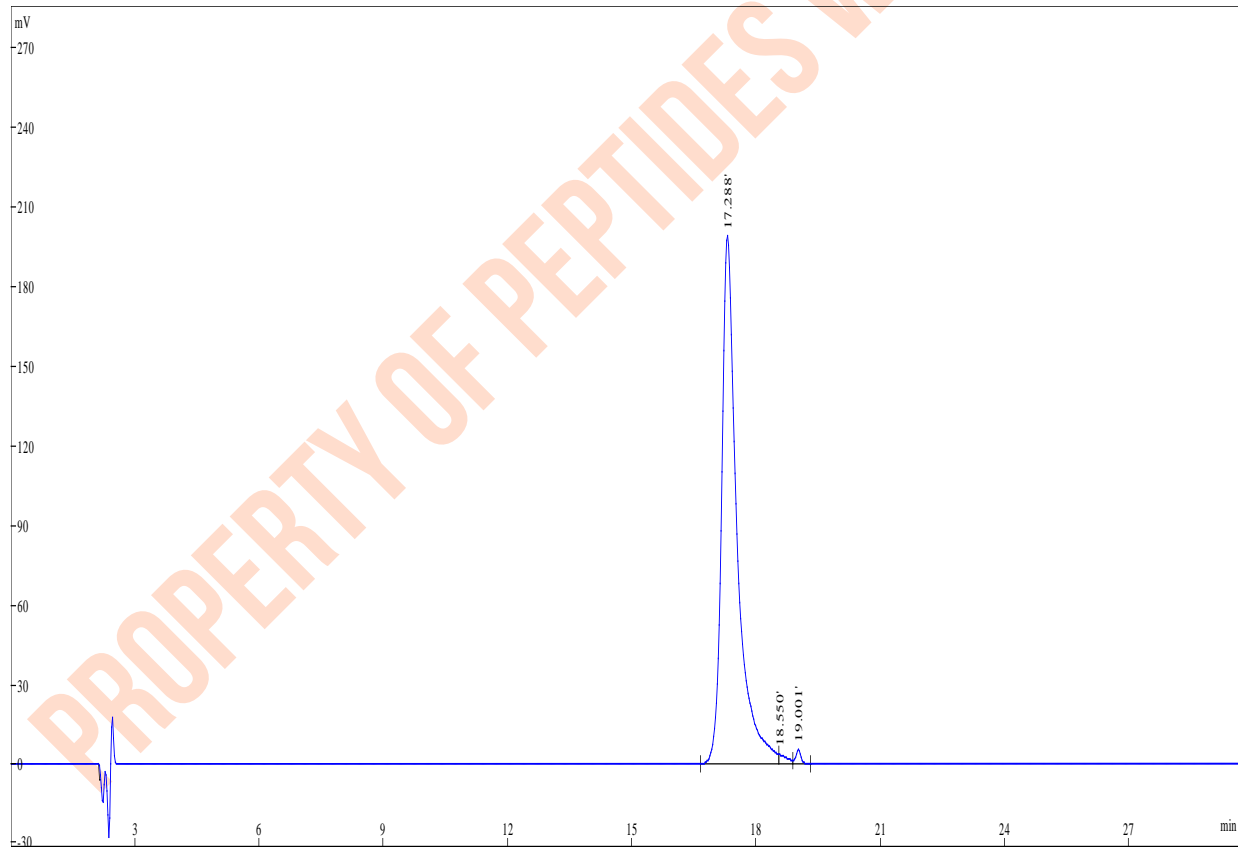
Gradient: 10-100% Buffer B in 300min

Flow: 1ml/min

Wavelength: 220nm

Column: Venusil C18 5µm 4.6*250mm

Chromatogram



Signal	Peak#	RT (min)	Area%	Area (mAU*s)	Height (mAU)
--------	-------	----------	-------	--------------	--------------

	1	17.288	98.04	5209540	199477
	2	18.550	0.9529	50630	3666

3	19.001	1.004	53371	5858
---	--------	-------	-------	------

Total		100	5313541	209001
-------	--	-----	---------	--------

PROPERTY OF PEPTIDES WAREHOUSE